

# Jeppesen SIMCharts

This aeronautical chart is intended for flight simulation use ONLY and will vary from actual navigational charts.

**SAME**

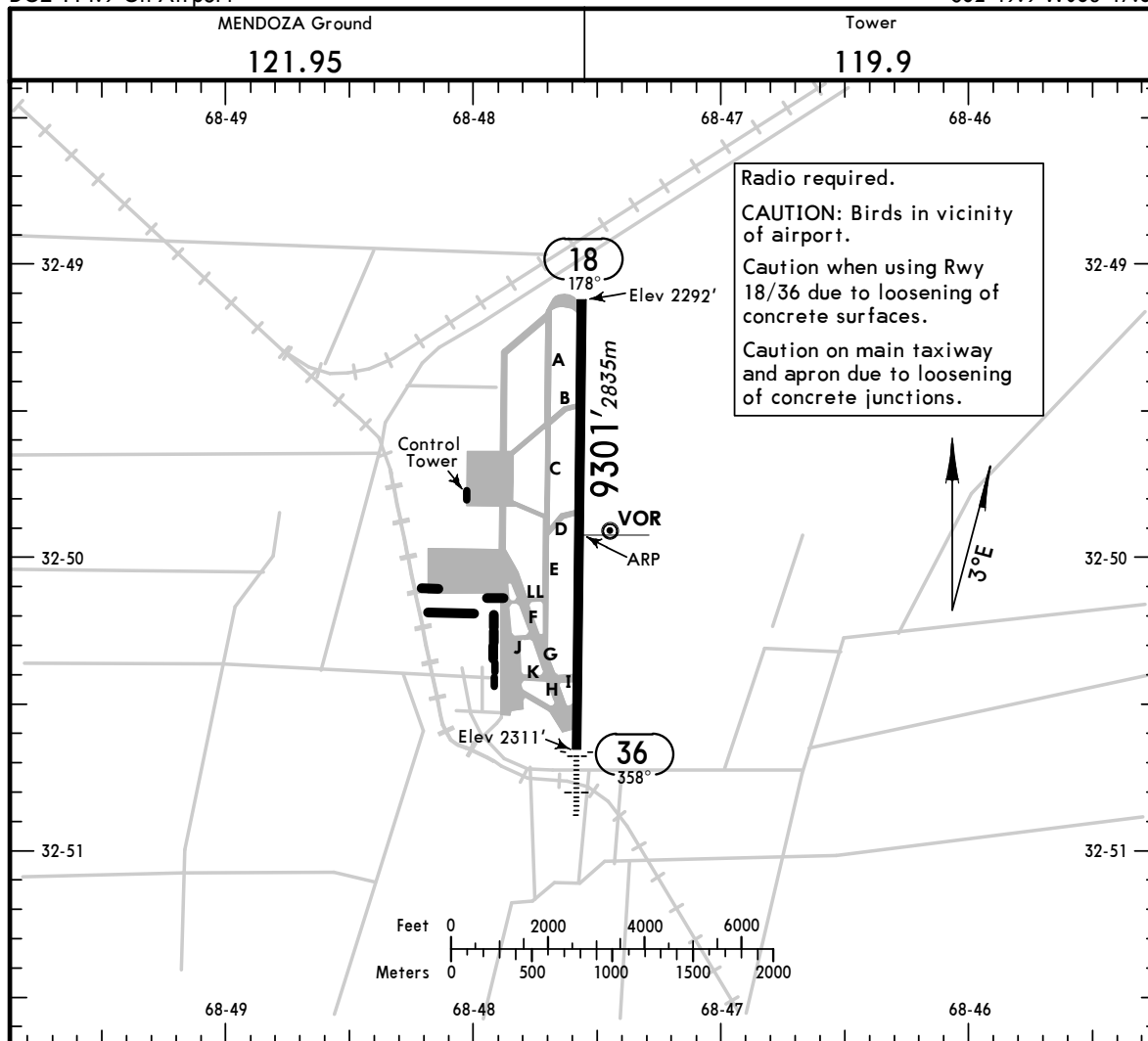
Apt Elev **2311'**  
DOZ 114.9-On Airport

**JEPPESSEN**

19 JAN 01 (11-1)

**MENDOZA, ARGENTINA**

**EL PLUMERILLO**  
S32 49.9 W068 47.6



Radio required.  
CAUTION: Birds in vicinity of airport.  
Caution when using Rwy 18/36 due to loosening of concrete surfaces.  
Caution on main taxiway and apron due to loosening of concrete junctions.

**ADDITIONAL RUNWAY INFORMATION**

RWY		USABLE LENGTHS			WIDTH
		Threshold	LANDING BEYOND Glide Slope	TAKE-OFF	
18	RL PAPI-L (angle 3.0°)				177'
36	RL SALS PAPI-L (angle 3.0°)				54m

TAKE-OFF			
All Rwy's			
		AIR CARRIER (FAR 121)	
1 Eng	Available Landing Minimums	2 Eng	Take-Off Altn Apt. Filed
2 Eng	Take-Off Altn Apt. Filed 30m -300m or Available Landing Minimums		30m -400m or Available Landing Minimums
3 & 4 Eng	Take-Off Altn Apt. Filed 30m -300m	3 & 4 Eng	Take-Off Altn Apt. Filed 30m -400m